

REQUEST: REPLACEMENT ACCOMMODATION LADDER WITH TOP PLATFORM

Sheet 1 / 4
Rev 1
[Date: 18-02-19]

First Name _____

Last Name _____

Function _____

Company Name _____

E-mail Address _____

Tel. Number _____

Vessel Name _____

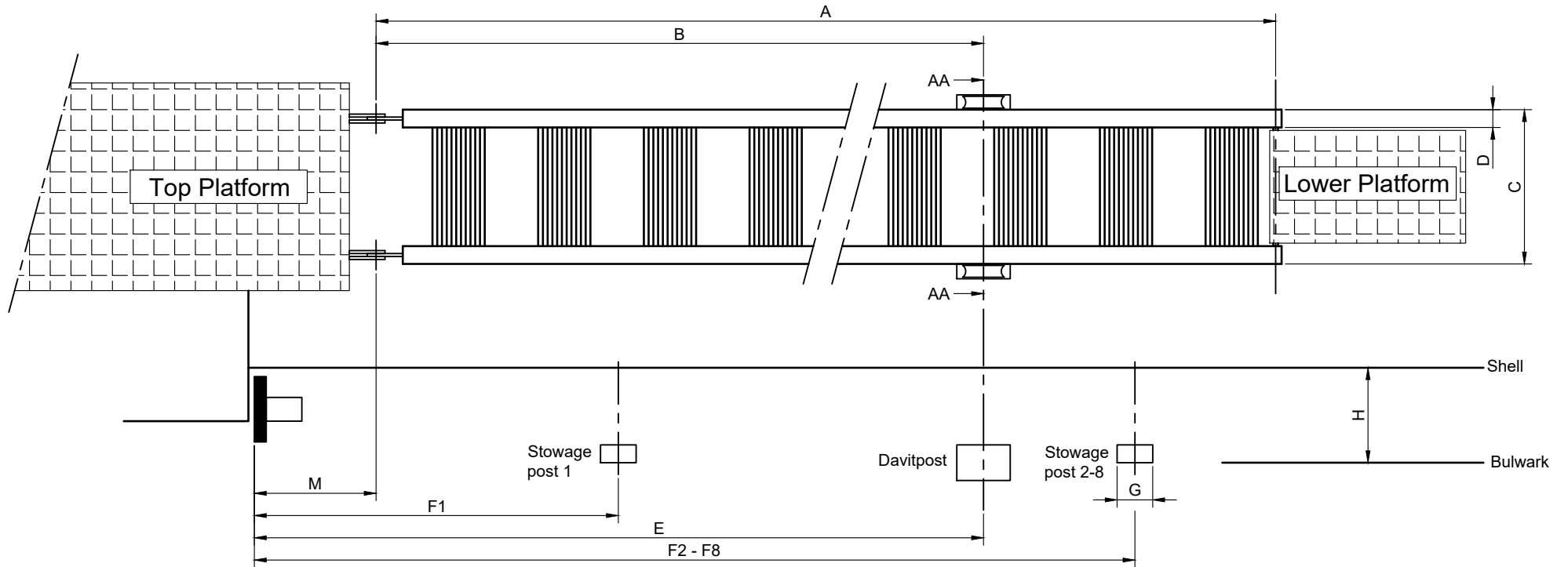
IMO Number _____

Please Check the Relevant Boxes

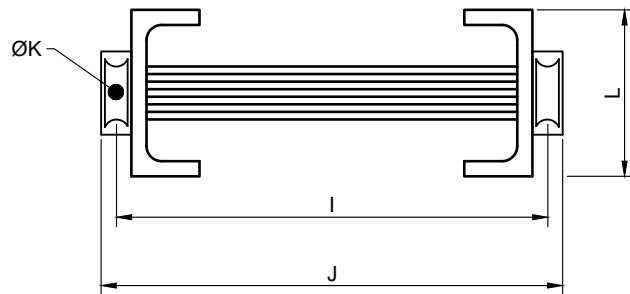
Side	Starboard	<input type="checkbox"/>	Portside	<input type="checkbox"/>
Leading	Forward	<input type="checkbox"/>	Aft	<input type="checkbox"/>
Rails	Folding Handrails	<input type="checkbox"/>	Ropes & Stanchions	<input type="checkbox"/>
Steps	Fixed Curved Steps	<input type="checkbox"/>	Self-Levelling Steps	<input type="checkbox"/>

Send this form to sales@mme-group.com
or use the submit button on the last page

Top view

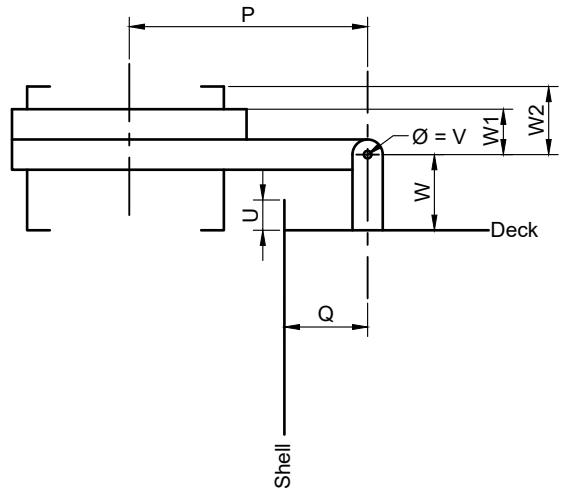


Section AA-AA

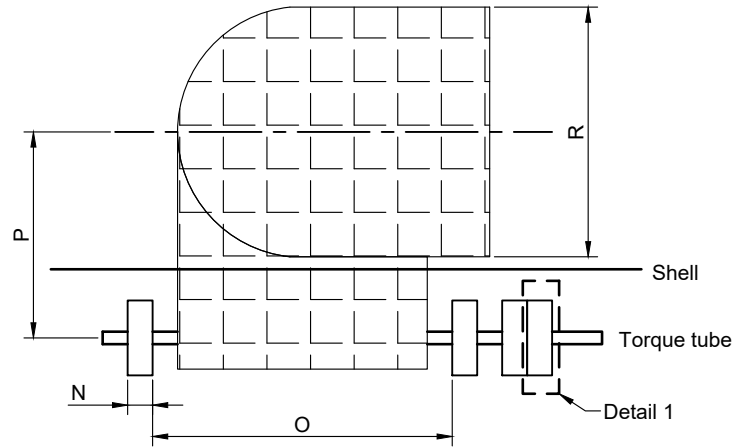


Date:			Catholic Protection Division Rietdekkerstraat 16 P.O. Box 4222 2980 GE Ridderkerk Netherlands Tel: +31 (0)180 48 28 28 E-mail: sales@mme.nl www.mme-group.com		Projection: 
			Order number:		Accommodation Ladder with top platform
Description:	Drawn: ESM	Date: 30-01-19	Project:		Sheet 2/4
	Checked: PP	Date: 30-01-19	Dwg: GA.001-02-B01		
Rev.	Approved:	Date:	Copyright MME. No part of this drawing may be copied, disclosed, or made public, in any form, without prior written consent of Materiaal Metingen Europe.		

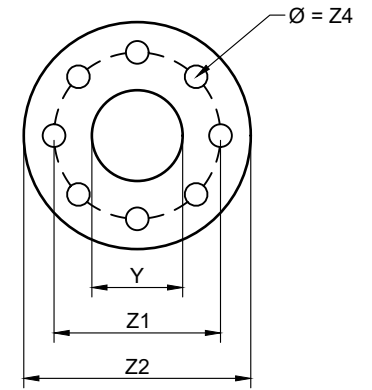
Side view - situation 1



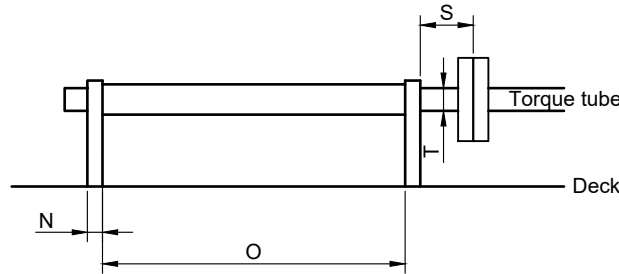
Top view



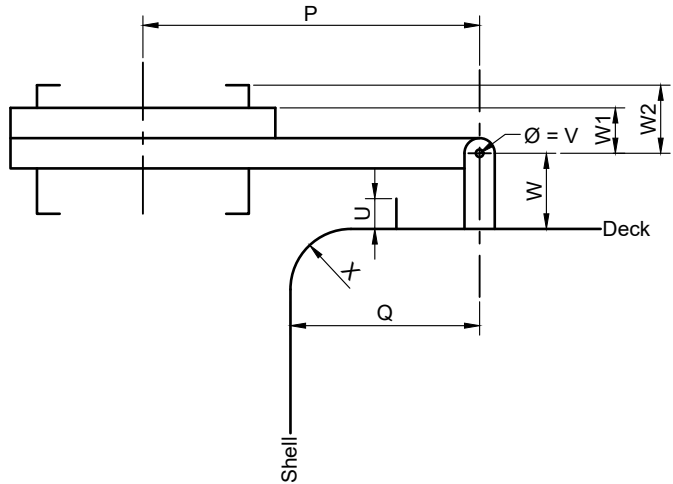
Detail 1
Flange connection



Front view




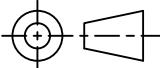
Side view - situation 2



Note: In case folding handrails are required, additional information would be needed in order to secure a correct fitting of the folding handrails of the ladder to the handrails of the top platform.
Choose between situation 1 or 2 which matches your situation.

Date:			Cathodic Protection Division Rietdekkerstraat 16 P.O. Box 4222 2980 GE Ridderkerk Netherlands Tel: +31 (0)180 48 28 28 E-mail: sales@mme.nl www.mme-group.com		Projection: 
			Order number:		Scale: NTS
Description:	Accommodation Ladder with top platform				
	Drawn: ESM	Date: 30-01-19	Project:		Sheet 3/4
Checked: PP	Date: 30-01-19	Dwg: GA.001-02-B01			
Rev.	Approved:	Date:	Copyright MME. No part of this drawing may be copied, disclosed, or made public, in any form, without prior written consent of Materiaal Metingen Europe.		

Item	Description	Dimension (mm)
A	Distance center pivot pin top platform - center pivot pin bottom platform	
B	Distance center pivot pin top platform - center sheave bracket	
C	Outside width of ladder	
D	Width of side stringer	
E	Distance inside decklug top platform - centerline davit post	
F1	Distance inside decklug top platform - centerline stowage post 1	
F2	Distance inside decklug top platform - centerline stowage post 2	
F3	Distance inside decklug top platform - centerline stowage post 3	
F4	Distance inside decklug top platform - centerline stowage post 4	
F5	Distance inside decklug top platform - centerline stowage post 5	
F6	Distance inside decklug top platform - centerline stowage post 6	
F7	Distance inside decklug top platform - centerline stowage post 7	
F8	Distance inside decklug top platform - centerline stowage post 8	
G	Width of stowage post	
H	Distance outside shell plating - bulwark or stanchion rail	
I	Distance between centerline sheaves	
J	Distance between outside sheave brackets	
K	Diameter sheaves	
L	Height of side stringer	
M	Distance inside decklug top platform - center pivot pin top platform	
N	Thickness decklug	
O	Distance between decklug	
P	Distance center top platform hinge pin - centerline top platform	
Q	Distance center platform hinge pin - outside of shell plating	
R	Width top part of top platform	
S	Distance outside decklug - outside top platform flange	
T	Diameter shaft	
U	Height of scupper plate	
V	Diameter of hole for top platform hinge pin	
W	Distance center top platform hinge pin - deck	
W1	Distance center top platform hinge pin - top of decking	
W2	Distance center top platform hinge pin - top of stringer ladder	
X	Radius of shear strake	
Y	Inside diameter flange	
Z1	Diameter over center holes	
Z2	Outside diameter flange	
Z3	Thickness of flange	
Z4	Diameter of holes	
Z5	Amount of holes	

<p>Or mail to sales@mme-group.com</p>	Date:	 <p>Catholic Protection Division Rietdekkerstraat 16 P.O. Box 4222 2980 GE Ridderkerk Netherlands Tel: +31 (0)180 48 28 28 E-mail: sales@mme.nl www.mme-group.com</p>	Projection:		
			Scale: NTS		
	Order number:		Accommodation Ladder with top platform		
	Rev. Description:		Drawn: ESM	Date: 30-01-19	Project:
	Checked: PP	Date: 30-01-19	Dwg: GA.001-02-B01		
	Approved:	Date:	<small>Copyright MME. No part of this drawing may be copied, disclosed, or made public, in any form, without prior written consent of Materiaal Metingen Europe.</small>		